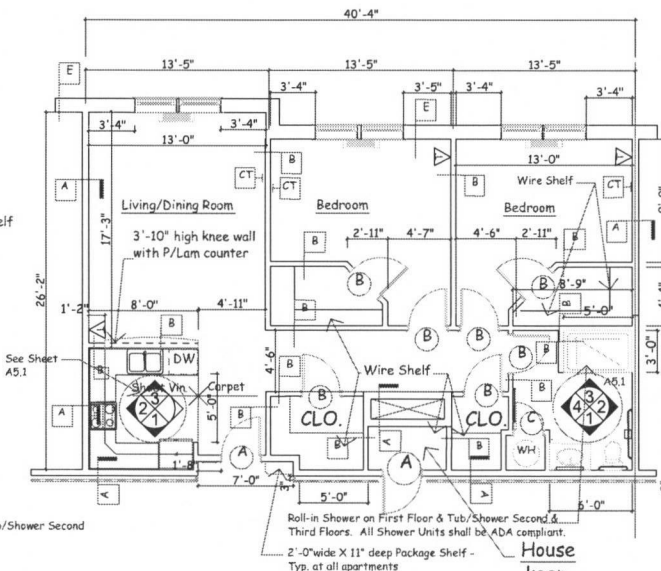


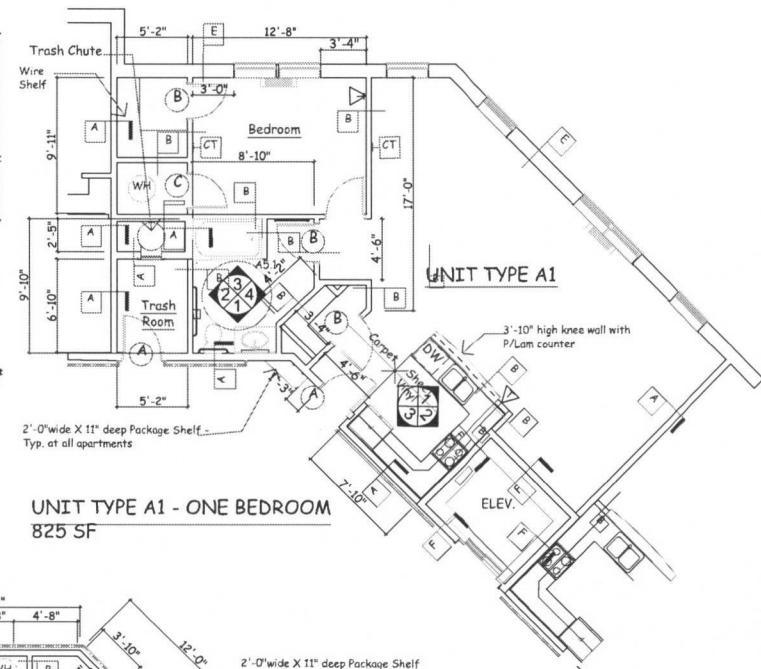
TYPICAL ONE-BEDROOM APARTMENT
TYPE A

650 SF



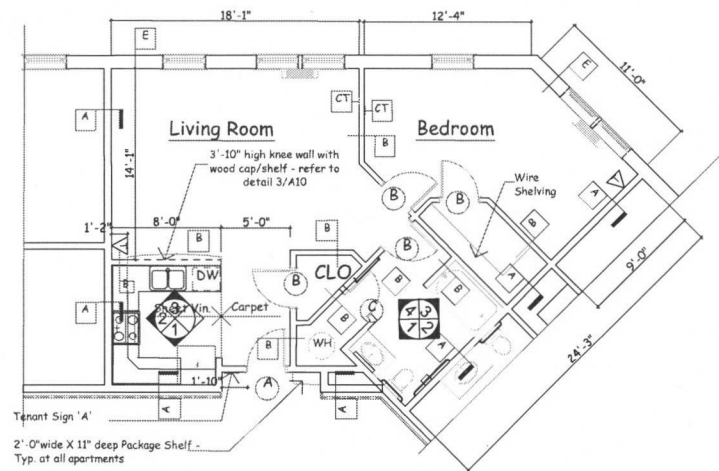
TYPICAL TWO-BEDROOM APARTMENT
TYPE B

980 SF



UNIT TYPE A1 - ONE BEDROOM

825 SF

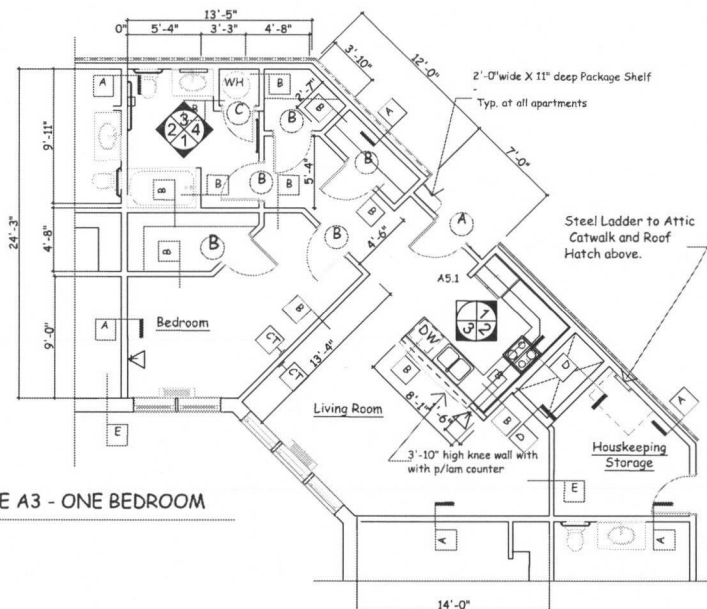


UNIT TYPE A2

745 SF

GENERAL NOTES:

1. All interior unit walls are Type B, if not specifically noted. All Corridor and Unit demising walls are Type A, if not specifically noted.
2. Showers in all units including Accessible Units 101, 102 and 103, shall have grab bars and fold-down seat No. 8206 L or R by American Specialties, or equal, and shall be be ADA compliant with grab bars and integral soap dish.
3. All shower pans shall be recessed to accommodate roll-in wheelchair. Provide slab depression as required at each first floor location
4. All kitchen cabinets shall be provided with full-depth blind corners with full-depth shelving and closer panels identical to cabinet wall panels.



UNIT TYPE A3 - ONE BEDROOM

750 SF

Foxtown-A1.5 - Unit Plans - 12-05-05